



Automation for Healthy Cows

Since 2012



The 'go to' for cattle lameness prevention

Hoofcount is a family run business based in rural Lancashire, England.

The Hoofcount footbath was developed by our Director, Anthony Marsh and introduced to the UK market in 2012. The first footbath (2.5m) was installed onto a farm in Cheshire, England. Designed with simplicity in mind, Hoofcount now has a sustained reputation across the world as the Market leader in Effective and Reliable Footbathing. Working alone and using extensive knowledge and experience of both engineering and the farming industry, Anthony continued to develop the footbaths to ensure customers (and cows) get the very best product.

Following the advice and guidance for the optimum footbath design from the University of Wisconsin, Anthony built our Excel footbath. This is our most popular style footbath and may be supplied in any length.

We are able to offer a bespoke service to customers and this is particularly helpful on Robot systems where space might be a high consideration. Each Hoofcount bath is designed, folded and built in our ever growing workshops in Lancashire. As a family business we pride ourselves in this as well as our bond with farmers and partners all across the world.

In 2021 we established Hoofcount North America inc. based in Ontario, Canada. This has enabled us to support our customers quickly whilst always maintaining excellent service.

We are passionate about helping to keep your cows healthy. Along with our own skilled team we are proud to work collaboratively with leading specialists to continuously develop our range of lameness prevention equipment.

The Hoofcount equipment is now being shipped to many countries worldwide.



Jane Marsh - Director





Contents

- 4 Hoofcount Standard Footbath
- 5 Hoofcount Multibath System
- 6–7 Hoofcount Footbaths for Robot Systems
- 8–9 Hoofcount Excel Footbath
- 10 Hoofcount Transit
- 11 Hoofcount Footbath Chemicals
- 12–13 Hoofcount PediVue
- 14 Hoofcount Smart Control
- 15 Hoofcount Lameness Cost Calculator



The standard footbath can be supplied at any length up to 3.7m long. This style bath is typically offered in internal widths of 750mm and 800mm (870mm and 920mm external width) and is 150mm high.

Custom sizes are available to ensure that this footbath is manufactured and installed to sit snugly within your exit race.

The 3m Standard footbath holds between 225L-240L of water and will ensure every cow dips every hoof at least twice everytime they pass through the bath.

Each bath is fitted with hard wearing rubber flooring to maximise cow comfort. All Hoofcount footbaths come with the same control box as standard. Using a separate valve for flush and fill, the bath empties through a FULL WIDTH opening door, effectively cleans and refills in just over 2 minutes.

Simple and consistently reliable the **HOOFcount** footbath is effective and easy to run.

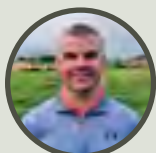


The Bath:

- Fully automatic with manual over-ride facility
- Can be set to cow count, a timer or manual
- Each bath has two chemical pumps for alternate chemicals or can simply dispense clean water
- Full marine grade, folded stainless steel construction to prevent chemical damage
- No electric pumps or unnecessary moving parts, reducing maintenance/servicing costs.
- 'Dry bath' mode available
- Smart connectivity is available to closely monitor and change chemical and bath settings from a smart device.



WHAT OUR CUSTOMERS SAY...



Our Hoofcount footbaths have removed one job for us while maintaining herd digital dermatitis incidence around the 3% mark. Back up service is quick and efficient.

David and Allan Murray, Kilmarnock, Ayrshire: 180 cow commercial herd

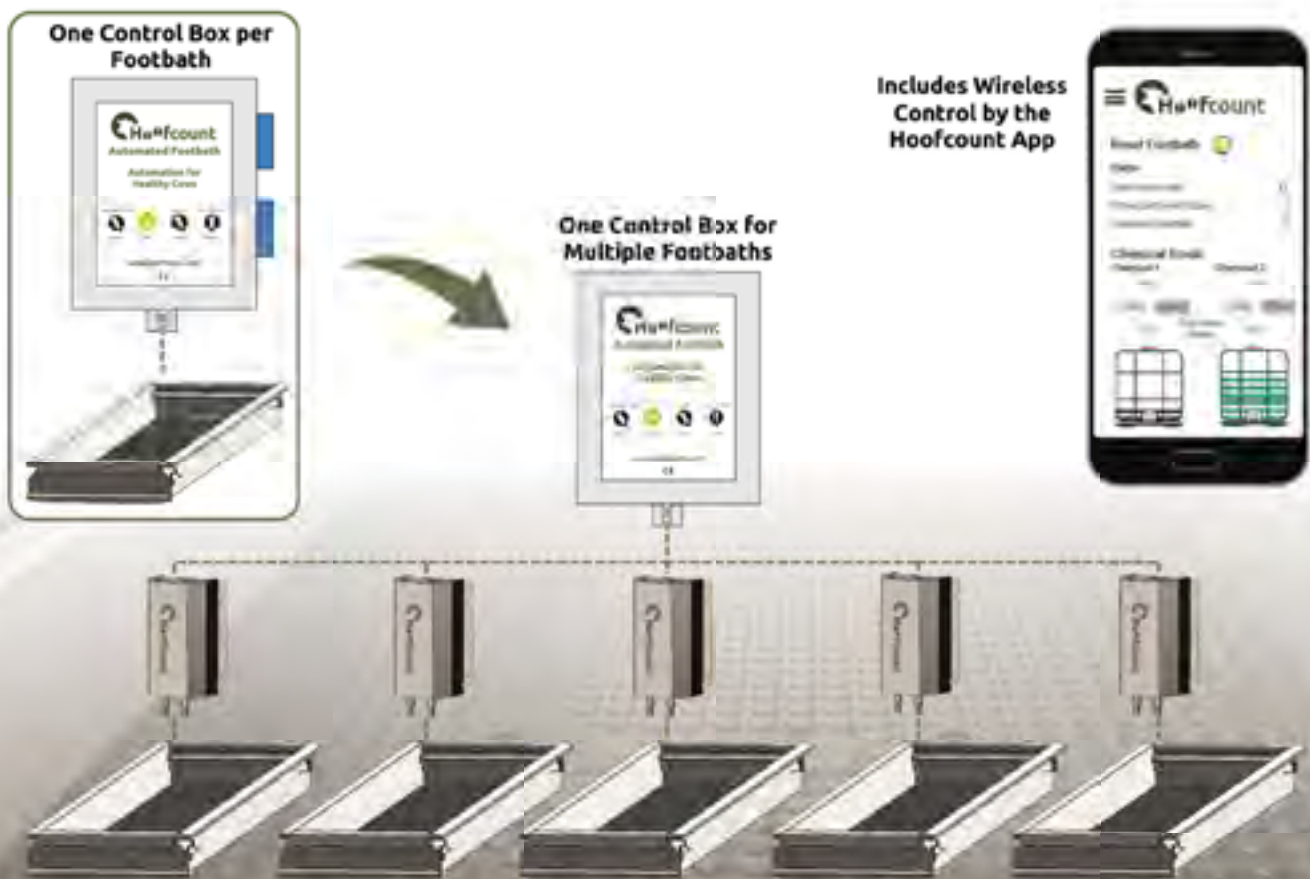
Cost-effective purchasing

This system offers customers a cost-effective way to purchase multiple baths for one farm.

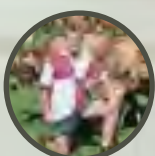
With one central control unit and chemical store the multi bath system can operate up to 5 baths.

All footbaths count and refresh independently to ensure an effective wash on each individual bath.

To ensure correct and quick dosing each bath has its own stainless steel valve unit which sits alongside the bath to allow for independent operation.



WHAT OUR CUSTOMERS SAY...



Hoofcount footbaths are providing the answer to safely managing footbathing in our rotary system and also helping to maintain digital dermatitis at virtually zero.

Jack Griffiths, Taynton Court Farms, Gloucestershire: 1,500 cows on three units

Footbath for your Robotic Milking System

Hoof care should be a priority in any Robot barn. Healthy cows make more frequent visits to the Robot system.

Used everyday the **HOOFcount** footbath allows chemical rates to be kept to a minimum.

In many cases, space within a robot barn is at a premium and this often determines the location of the footbaths and the length available when retro-fitting into an existing system. We are able to custom build the baths to the right size.



WHAT OUR CUSTOMERS SAY...



We had digital dermatitis issues on our farm for years. We installed four Hoofcount footbaths on the exit of each robotic milking system. Cows have near zero digital dermatitis, and we are very happy with the footbaths.

Aalt and Floria Pelleboer, Springford Ontario, Canada: 200 cow herd

Head to Head Robot systems:

It is possible to place 1 footbath in the middle of the head to head robots provided there is significant space in front and without hindering access.

Direct Exit:

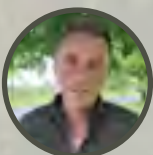
Where possible, we encourage our customers to install the baths on the direct exit of the robot. The cows may make several visits to the robot in any 24 hour period and therefore rules out the need to use a longer bath. A Hoofcount footbath can be made to any length with most farmers requesting a bath between 1.7m-2.5m on the direct exit.

Diversion Lane:

Placing a slightly longer bath within a diversion lane is now becoming more popular with many farmers making provision for the footbaths at the planning stage of new barns. Our Excel style bath is a good choice for the diversion lane as this helps cow flow with cows less likely to stand still in the baths.



WHAT OUR CUSTOMERS SAY...



Our three Hoofcount footbaths positioned at the robot exits are doing a great job and definitely helping to control digital dermatitis. Nowadays we have very few incidences. Aftersales service is excellent.

Gareth Steen, Clogher, County Tyrone: 250 cow commercial Holstein herd

Excel Footbath

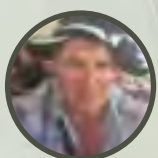
The Excel footbath is by far our most popular style footbath. Based on the Wisconsin University design this narrow base bath uses the least amount of solution to obtain the best results. At 200mm high this footbath is a little deeper than the standard style and, in our 3.7m long bath, will allow 3 dips per hoof with each cow pass.

As with all of our baths, we are able to custom build to fit into different settings on farm. Our 3m Excel style bath is becoming popular on smaller herds.

As a rule we provide 2 base widths on the Excel. These being 500mm and 600mm wide, depending on the race width on farm. A cows footprint is very narrow and along with using the least amount of water, this bath also supports excellent cow flow as the cows are unable to stand still comfortably.



WHAT OUR CUSTOMERS SAY...



We've installed an Excel Hoofcount footbath into the sort gate. It's well designed and long enough for three dips per hoof. We set it to automatically refill after 120 cows; it cleans out well, fills fast and it's efficient and reliable. And it's doing a good job minimising digital dermatitis in the herd.

Geoff Spence, Northallerton, North Yorkshire: 900 cow pedigree Holstein herd

Stainless Steel Side Sheets: The advantages

- Allow the base width to be narrow which requires less water and chemical (lowering costs)
- Ensures any splash remains in the bath
- Guarantees every hoof goes through the bath
- The bath is easy to fit into most race systems

This style bath is perfect for larger herds (200+) and especially suited to Rapid exit and Rotary Parlours.

1000+ cows:

Where there are significant numbers of cows going through the parlour each milking, we would recommend our Double or Triple Excel. We are able to provide a freestanding frame to support these baths. Talk to us for more information about these style baths.

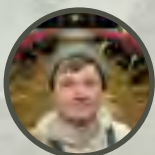
Free standing frame:

This is a useful addition to the footbath. Using the optional Cross bar supports this frame will hold 2 x 1000L IBC containers on top. This is a freestanding unit which, if necessary may be easily relocated in the future. The frame for the 3.7m bath is 3.8m long, 2m high and 1100mm wide (900mm internal width).

NB. We are able to build shorter frames as necessary.



WHAT OUR CUSTOMERS SAY...



Hoofcount has changed the way we look after our cows. We have less emergency repairs and spend more time doing maintenance trimming. The bath helps the cows repair themselves.

Tom Pemberton, Lytham, St Annes, Lancashire: 140 cow commercial herd

One stop health station for Dry Cow Precision management

The Hoofcount Transit is a one-stop integrated health station enabling individual dry cows and young stock to be routinely monitored, footbathed, fed and weighed.

The Transit enables farmers to precisely manage their dry cows and in-calf heifers in the final weeks prior to calving and provide them with the opportunity to enter lactation in OPTIMAL HEALTH.

Individual daily feed allocation can be programmed into the system, ensuring each cow receives adequate energy intake to maintain body condition. The optional weighing system notifies any abnormal deviations.

Data and non-visits are collected by the web-based data package.

The optional 'holding gate' makes for easier routine inspections.

The Transit can be supplied as either a 'Walk-in, Back-out' or 'Walk-in, Walk-out' system. The walk through Transit is ideal as a Heifer training system in robot barns.

Hoofcount Transit is another innovative aid to routine precision management, helping dairy farmers towards greater herd efficiency.



WHAT OUR CUSTOMERS SAY...



We went from running the cows through a manual bath once a week to footbathing every day through our Excel Hoofcount footbath. It has helped cut digital dermatitis incidents by around 50%.

Richard Beck, Sandbach, Cheshire: 360 cow pedigree Holstein herd

The Hoofcount footbath will work with any liquid solution and you are free to use your own choice of solution.



Many customers use our **HOOFCOUNT Extra F solution**. This is a liquid blend of Formaldehyde, Copper, Zinc and Aluminium. This unique blend offers the most effective solution to not only tackle Digital Dermatitis and prevent reoccurrences, but also condition the feet.

The **HOOFCOUNT Extra F** will continue to be effective even at lower temperatures, unlike formaldehyde alone.

We provide this in **25L, 200L and 1000L** containers.

Our **HOOFCOUNT Maxi G** combines Copper and Zinc and Glutaraldehyde and surfactants to provide an effective alternative to formalin based solutions.

Still with the same blend as our Extra F but without the Formalin, our product continues to incorporate Copper and Zinc into your footbath routine without having to handle these products yourself.



WHAT OUR CUSTOMERS SAY...



We have installed four Hoofcount footbaths to the exit of our robotic milking systems. We rarely see a case of digital dermatitis and the herd has a very good mobility score.

Nick Keen, Wincanton, Dorset: 300 cow crossbred herd





PediVue

Lameness detection system

New to the Hoofcount range and launched in 2024 is **PEDIVUE** (patent pending)

Using machine learning and vision the **PEDIVUE** can detect early signs of lameness. Located in the exit of the footbath the vision system monitors every hoof daily and using machine learning and AI will notify the farmer/herdsperson of any very early signs of Digital Dermatitis (Mortellaro).



See lameness differently

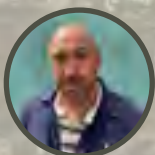
Hoofcount app compatible

Using the **Hoofcount App** or web interface, a herd overview can be seen as well as monitoring individual cows. This will also produce a list of cows which would benefit from an early inspection.

Early detection, prompt effective treatment (EDPET) is the best way to tackle lameness.



WHAT OUR CUSTOMERS SAY...



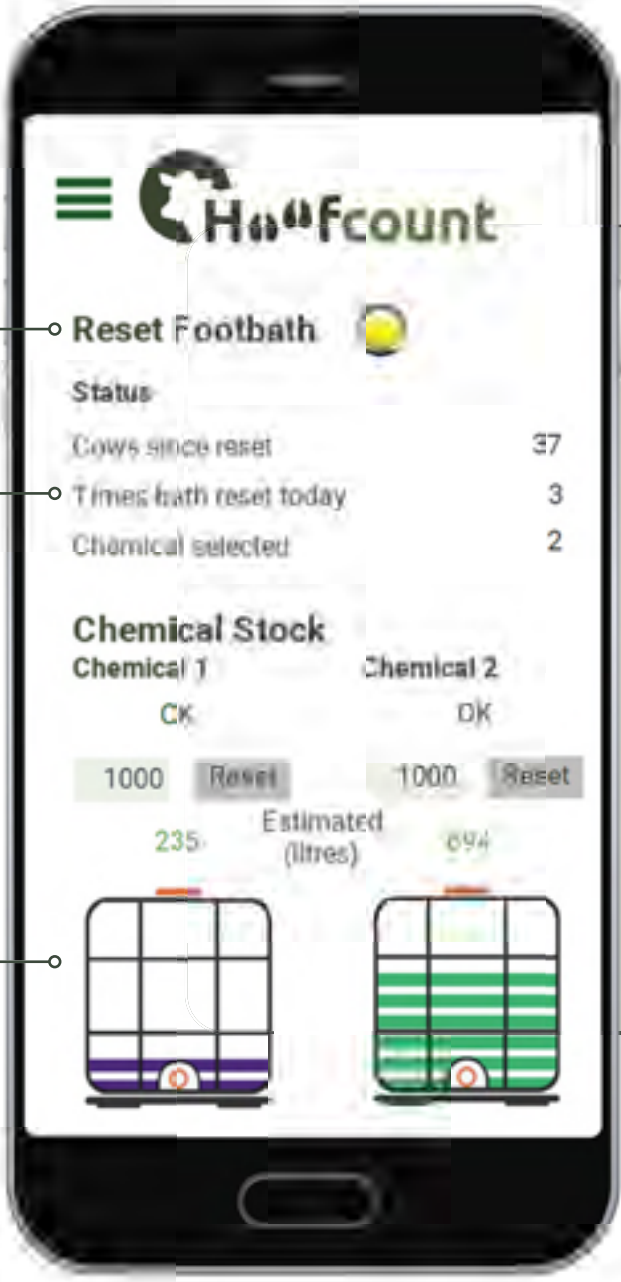
Our Hoofcount footbath is our most reliable piece of kit installed on farm. It makes footbathing simple and effortless; and from day one we've had brilliant service. A must have piece of equipment for all farms.

Mark Chetwynd, Lampeter, Ceredigion: 700 cow herd

The smart control is a great way to closely monitor the bath use and settings conveniently from a mobile device.

As an 'optional' extra to any Hoofcount footbath, this is ideal where there are multiple baths on one farm. This allows the farmer to change all the bath settings (chemical rates, cow counter etc) simultaneously without the need to visit each control box individually.

The smart control will also send notifications when chemical is running low or about to run out. It may also be set to notify if the cow counter is blocked or the bath has not been refreshed. All helping to provide the most effective and consistent footbathing on your farm.



The image shows a smartphone displaying the Hoofcount app interface. The screen is divided into several sections: a top navigation bar with the Hoofcount logo and a hamburger menu icon; a 'Reset Footbath' button with a yellow circular indicator; a 'Status' section with a table of data; a 'Chemical Stock' section with two columns for 'Chemical 1' and 'Chemical 2', each showing a '1000' value, a 'Reset' button, and an 'Estimated (litres)' value (235 and 694 respectively); and two illustrations of footbath units at the bottom. Three callout boxes point to specific features: 'Easily reset the bath with one click.' points to the 'Reset Footbath' button; 'Immediate access to all bath information' points to the 'Status' section; and 'Alerts sent when chemical is running low' points to the 'Estimated (litres)' values. A large box on the right lists 'Other smart control features include:' followed by a bulleted list.

Easily reset the bath with one click.

Immediate access to all bath information

Alerts sent when chemical is running low

Other smart control features include:

- Integrated (central) bath control
- **Data collection:**
 - cow visits
 - chemical usage
- Remote access for program updates / settings changes
- **Notification of issues:**
 - low chemical
 - service due
 - cow count blocked

WHAT OUR CUSTOMERS SAY...



There's been a good response to lowering digital dermatitis levels followed by a steady decline in other feet issues. Investing in Hoofcount technology is a no brainer.

Abi Reader, Cardiff, Glamorganshire: 200 cow commercial herd



Lameness Cost Calculator App



A new App designed to inform dairy producers of the cost of lameness versus the cost benefits of footbathing.

Called the **Hoofcount Lameness Cost Calculator**, the App enables you to calculate the cost of lameness to your herd according to current incidence level based on AHDB data. You are then able to evaluate the estimated cost savings made following the installation of a Hoofcount footbath based on data from over 1,000 farms recording reduced lameness and digital dermatitis.

The App also helps Hoofcount footbath users to calculate running costs per cow and per year, the level of chemical used and when to re-order more, and to contact the company direct for servicing and upgrades. Plans are to extend its scope to share lameness data from hoof trimmers' recording Apps to provide herd managers with up to date and relevant costings for their respective herds.

The App is available in three different currencies.



DOWNLOAD FREE OF CHARGE on APPLE OR ANDROID



Reservoir Road, Barnacre
Preston, Lancashire
PR3 1RP
UK

+44 (0)1995 603028



598 Glengary Crescent, Fergus
Ontario
N1M 2W8
Canada

+1 (608) 2688719

Email: info@hoofcount.com



www.hoofcount.com

